

# KITCHENS BEDROOMS & BATHROOMS

THE MAGAZINE FOR HOME REMODELLING, EXTENSIONS, LARGE RENOVATIONS, AND INTERIORS ADVICE

## CREATE YOUR DREAM KITCHEN

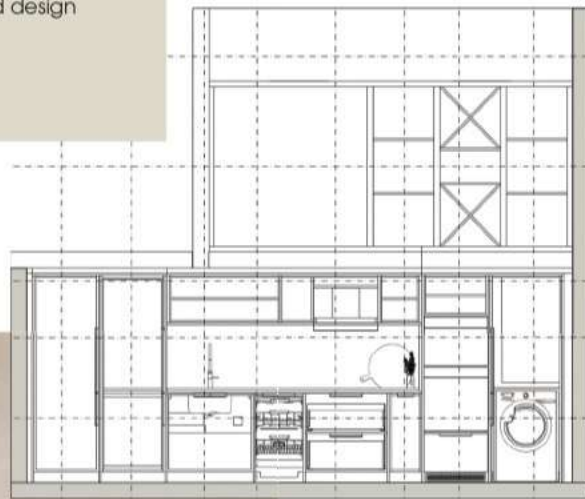
WITH OUR ULTIMATE DESIGN DOS AND DON'TS



WHY  
WALK-IN  
SHOWERS  
ARE AT THE  
TOP OF EVERY  
BATHROOM  
WISHLIST

plus

• BATHROOM WALLS & FLOORS • BEDROOM DESIGN IDEAS • THE NEO DECO TREND • AMAZING REAL PROJECTS

**TIME: EIGHT MONTHS****September:** Initial brief from designer**September-November:** Design proposals and deposit placed**February:** Site survey and design updates**March:** Design sign-off**May:** Installation

# FROM START TO FINISH

A lot goes into a project – from moodboards and drawings to installation and accessorising. Here, we look at a kitchen redesign, as part of a complete overhaul of a London apartment

## THE PROJECT

A young professional wanted a complete redesign of his south London apartment, with the kitchen at the heart of the home and the focal point of the space.

## THE BRIEF

The homeowner wanted to make the most of the apartment's stunning double-height ceilings in a way that felt both aesthetically beautiful and unique. Maximising storage was equally key, without compromising on style, plus he wanted space to display art and ornaments. Finally, the island needed to comfortably accommodate four people for dining.

## THE DESIGN PROCESS

Working in collaboration with interior designer Lily Charteris of Studio Charteris, Cor Domi designer Hannah Stannard translated Lily's design intent into a

detailed kitchen scheme, developing the concept alongside both Lily and the homeowner. The internal layout was considered in detail to ensure well-organised storage that supported the way the owner lives and entertains.

Particular attention was given to the island design – the proportions were studied to allow comfortable seating for four people. By choosing not to position either the hob or sink on the island, the team created a more sociable, uninterrupted surface, resulting in a welcoming space for dining and gathering.

Hannah also advised opting for porcelain worktops in place of the marble originally specified. This decision not only helped manage costs but provided a far more practical solution for everyday use, offering superior resistance to heat, stains, and scratches while maintaining an elegant aesthetic.

## THE PRACTICALITIES

**Kitchen designer** Hannah Stannard  
**Fully bespoke cabinetry**

*Cor Domi, £20,500*

**Worktops** Taj Mahal porcelain,  
*Marazzi, £6965*

**Main appliances** *Neff, £8200*

**Sinks and taps** *Bower, £1750*

**Total cost** £37,415



## THE FINAL DESIGN

The result is a truly distinctive, fully bespoke kitchen, tailored to both the architectural setting and the homeowner's lifestyle. Double-height joinery creates an impressive focal point, forming a dramatic backdrop that elegantly showcases artwork, curated objects, and integrated wine storage.

The cabinetry exterior is finished in a rich dark oak veneer, establishing a moody, masculine aesthetic – beautifully balanced by the Taj Mahal-inspired porcelain worktops, which introduce lighter tones while offering exceptional durability. Internally, a Brown Abano Ash board from Egger was selected to complement the overall look and feel of the kitchen while providing a more practical and cost-effective solution than continuing the oak veneer throughout. A bespoke ladder adds both character and function, granting access to the upper-level cabinetry. Completing the scheme, dark bronze handles by Hard & Ware sit quietly within the design, blending seamlessly into the refined material palette. @